

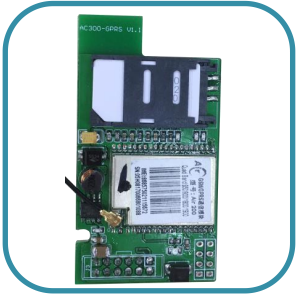
## Introduction of Internet of Things

---



## Four Kinds of GPRS Data Transmission Module

There are several kinds of GPRS Data Transmission Module self-developed by VEICHI



### AC300-GPRS

SPI Interface, Support Cloud Platform,  
Modbus Protocol  
(Special for AC300 )



### S200-GPRS(B)

RS485 Bus Connection, Modbus Protocol,  
Support Cloud Platform  
(Special for construction hoist)



### GPRS-D

APP QR code connection, Wireless  
connection with cloud platform  
(Special for SI 20/SI30)



### GPRS-C 1.1

Smaller size, high efficiency, Multi-nodes  
connection, Support cloudplatform  
(General inverter)

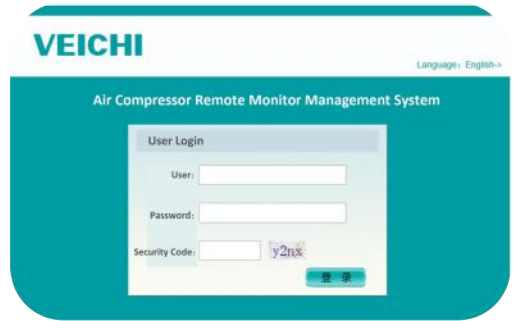


## Cloud Platform of VEICHI

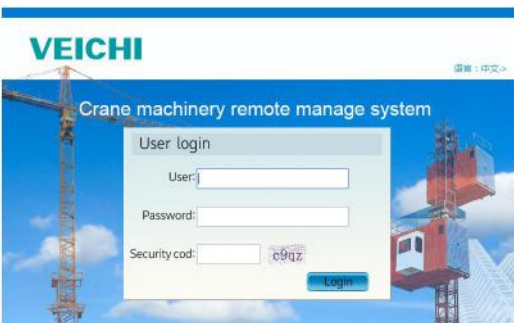
### ▼ Solar Pump IOT



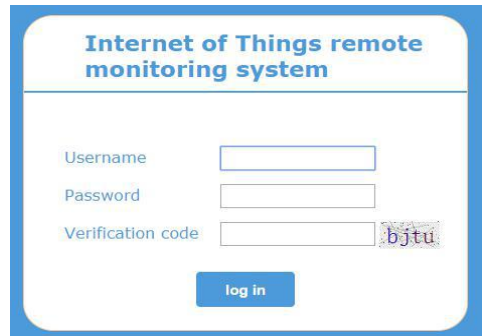
### ▼ Air Compressor IOT



### ▼ Construction Hoist IOT



### ▼ General IOT



## Cloud Platform Features



### Real-time Monitoring

Real-time monitoring, Periodic sampling, Parameter remote inspection & modification, Remote lock and unlock, Run & Stop

### Data Analysis

inspection and exporting of fault report, Graphical analysis, Statistics of running time

### Fault Report

Real-time fault report, Fault record & analysis, Fault statistics

### GPS Localizayon

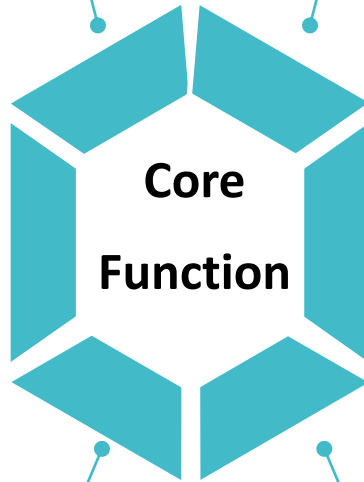
Real-time location track  
Intelligent location display  
GPRS parameter remote inspection & modification

### Device Management

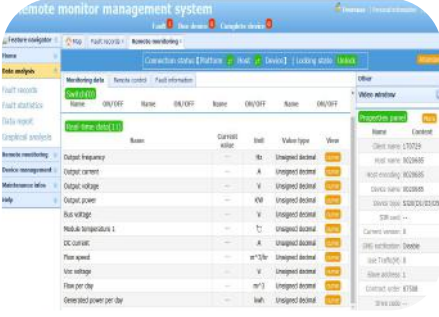
Device type, Device settings, Expiration maintenance

### Maintenance Infos

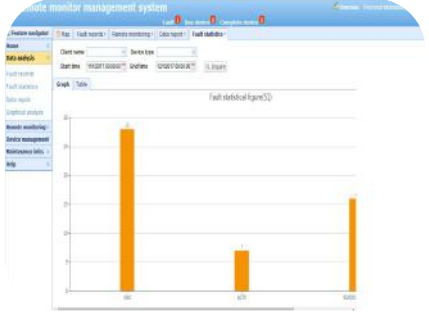
Role management , User management, Data management, Operation record, Password modification



## Cloud Platform Features



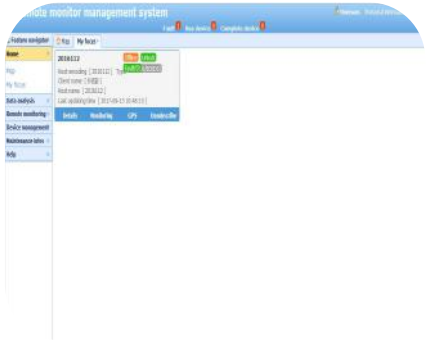
Real-time Monitoring



Fault Statistics



Fault Report



Device Focus



GPS Localization



Graphical Analysis

## Cloud Platform Features



Real-time localization



Remote control /communication/ measure/monitoring



Fault statistics & analysis

Maintenance record & reminder



## APP IOT Mobile BLE APP

### Non-touch Connection

Download by scanning QR Code and connect with GPRS module to achieve non-touch connection.

### Intelligent Control

Intelligently control the operation status of terminal devices at real time

### Easy to download APP

Download at anytime and anywhere to update the latest APP with low memory occupation.

### Easy to check & modify

Check the information and modify parameters arbitrarily, including unit, function declaration and prompt messages about errors.





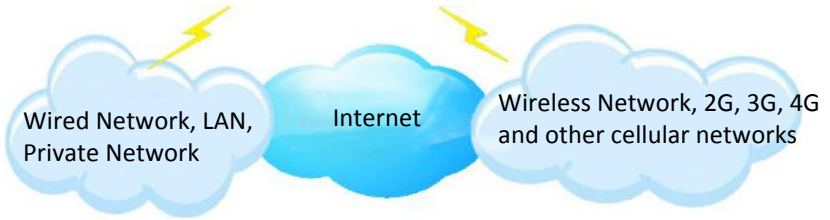


## GPRS DTU Network Topology

Application Layer



Network Layer



Perception Layer



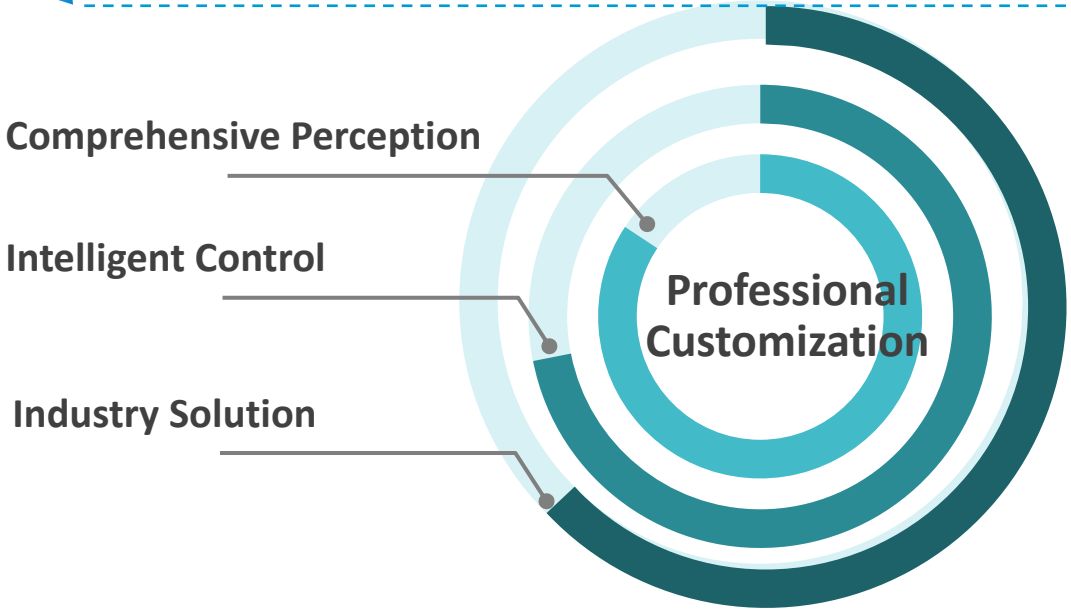
Solar pump controller      Textile, chemical fibers, crane, tower crane, construction food packaging controller      hoist integrated machine

Equipment Layer





## IOT Features of VEICHI



### Industry Solution

Our R&D team will develop integrated industry solutions according to customer's requirements.



### Intelligent Control

Process and analyse the data from terminal devices in cloud platform and APP to realize intelligent and professional management.



### Comprehensive Perception

The data transmission module could collect parameters information of terminal devices, monitor the running status and report the fault information forwardly at anytime and anywhere. Wireless and remote connection with cloud platform wireless.

## Application-Solar Pump Inverter

### Solution Features:

Data Transmission Module: GPRS-D

Communication Mode: Wireless, Bluetooth

Terminal Devices: SI20、SI30

### Solution Advantages:

- (1) Provide IOT integrated solutions of solar pump inverter;
- (2) Automatically collect and upload without interruption in 7\*24 hours to monitor the pump status.
- (3) Basing on field conditions, the remote expert consultation function could enhance the ability of accident handling;
- (4) Cloud computing calculates the remain time according to the work life of spare parts and reminds the replacement;
- (5) Support inquiry by PC and mobile APP.



## Application- Construction industry

### Solution Features:

Data Transmission Module: S200-GPRS、GPRS-D

Communication Mode: Wireless Transmission

Terminal Device: Hoist, Tower Crane, etc.

### Solution Advantages:

- (1) Provide the integrated solutions of tower crane IOT system;
- (2) Not bother with small problems through parameter remote modification and 24-hour real-time monitoring;
- (3) Push fault information the first time by the pre-alarm system;
- (4) Historical data statistics supplies big data applications and provides support for precise marketing and products upgrading.;

### Solved Problem:

High-altitude operations, hard maintenance, lower efficiency of inspection; higher after-sales costs, etc.

#### Cloud Platform



#### Wireless Transmission Module



#### Controller



### Application Cases



## Application-Textile and Food Packaging

### Solution Features:

Data transmission module: S200-GPRS, GPRS-D

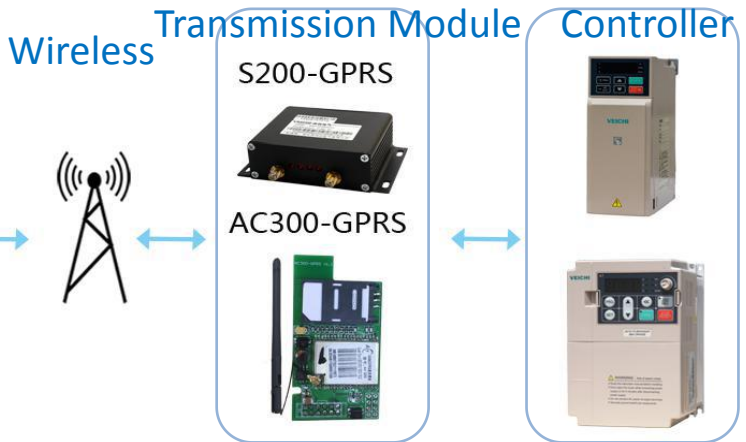
Communication mode: wireless transmission.

Terminal device: AC70C, AC300 series General VFD.

### Solution Advantage:

- (1) Provide IOT integrated solutions for textile production;
- (2) Real-time monitoring, regular sampling, intelligent analysis and calculation for device operation time and yield, working time coordination of production lines, intelligent pre-alarm and SMS real-time notification of fault information;
- (3) Historical data statistics supplies big data applications and provides support for precise marketing and products upgrading.

### Cloud Platform



### Application Cases





## Contact us:

WhatsApp: +86-138 2881 8903

Skype: veichi1@outlook.com

Email: overseas@veichi.com

Website: [www.veichi.org](http://www.veichi.org)

Facebook: [veichiglobal](https://www.facebook.com/veichiglobal)

Twitter: [VeichiGlobal](https://twitter.com/VeichiGlobal)

